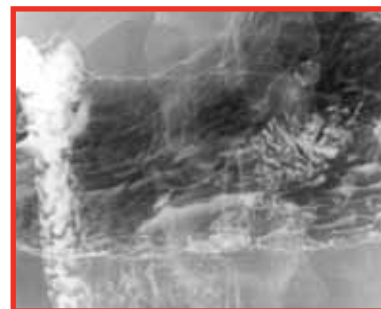


## i<sup>5</sup>RF – A digital fluoroscopy imaging system with state-of-the-art image quality and integration capabilities.

The new i<sup>5</sup>RF features many new software updates, making it faster and easier than ever to acquire high-quality images with minimal effort. New low-dose technology surpasses industry standards and puts patient safety first. And with integrated, on-screen generator controls, workflow is significantly improved.

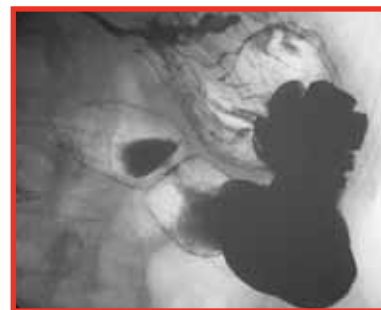
### Cost-effectiveness

- Simple upgrade path for existing systems
- Future upgrade add-ons available
- Service mode with remote diagnostics
- System warranty



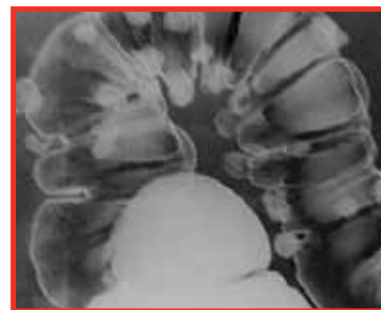
### Image Quality

- InfiVision™ image processing technology utilizes the lowest possible dose in delivering optimum image quality
- Advanced imaging algorithms
- Post-processing for increased image quality



### Productivity

- High-performance database for faster system throughput
- Enhanced GUI for easy navigation
- Optimized workflow
- DICOM 3.0 and IHE compliant



### Integration Capabilities

- Generator integration
- Integrated with a variety of CCD cameras including InfiMed's InnoVision™ CCD camera

## System Specifications:

### Premium high-throughput digital imaging system.

#### System

- InfiMed Innovision™ digital small or large format CCD camera
- High-speed dual-core CPU
- Windows® operating system
- Color touch-screen monitor
- DICOM DVD-RW with on-board viewer

#### InfiVision™ Image Processing Software

- Utilizes advanced image processing algorithms
- Imaging parameters tied to customizable APR-based acquisition profiles
- Extensive group of post-processing features for optimum image quality
- Basic measurement and annotation tools
- QCA measurement tools – DSA option

#### Image Acquisition

- Automatic Image Optimization based on customizable acquisition profiles
- Optimized workflow for fast patient throughput
- Acquisition up to 15 FPS (rapid sequence spots – generator dependent)
- Customizable fields allow exam settings to be pre-programmed individually, making for one-click exam setup
- One-button click to enable Emergency Patient Study
- Background multi-tasking hardcopy allows simultaneous processing and printing during acquisition
- Programmable Sequences – DSA option

#### DICOM 3.0 Network Interface

- DICOM 3.0 network interface kit includes print class, storage class, worklist, modality perform procedure step and storage commitment class

#### Supports IHE Integration Profiles

- Scheduled Workflow (SWF)
- Patient Information Reconciliation (PIR)
- Portable Data for Imaging (PDI)
- Key Image Note (KIN)
- Consistent Presentation of Images (CPI)

#### Fluoro Capabilities

- Fluoro loop
- Expanded edge enhancement
- Last image hold or real-time fluoro store
- Real-time roadmapping – DSA option
- Integration with motion correction
- Pulsed fluoro (generator dependent)
- Acquisition up to 30 FPS



To learn more about the InfiMed i<sup>5</sup>RF system, contact your InfiMed sales representative – [sales@infimed.com](mailto:sales@infimed.com).

121 Metropolitan Drive  
Liverpool, NY 13088  
[www.infimed.com](http://www.infimed.com)  
+1-315-453-4545