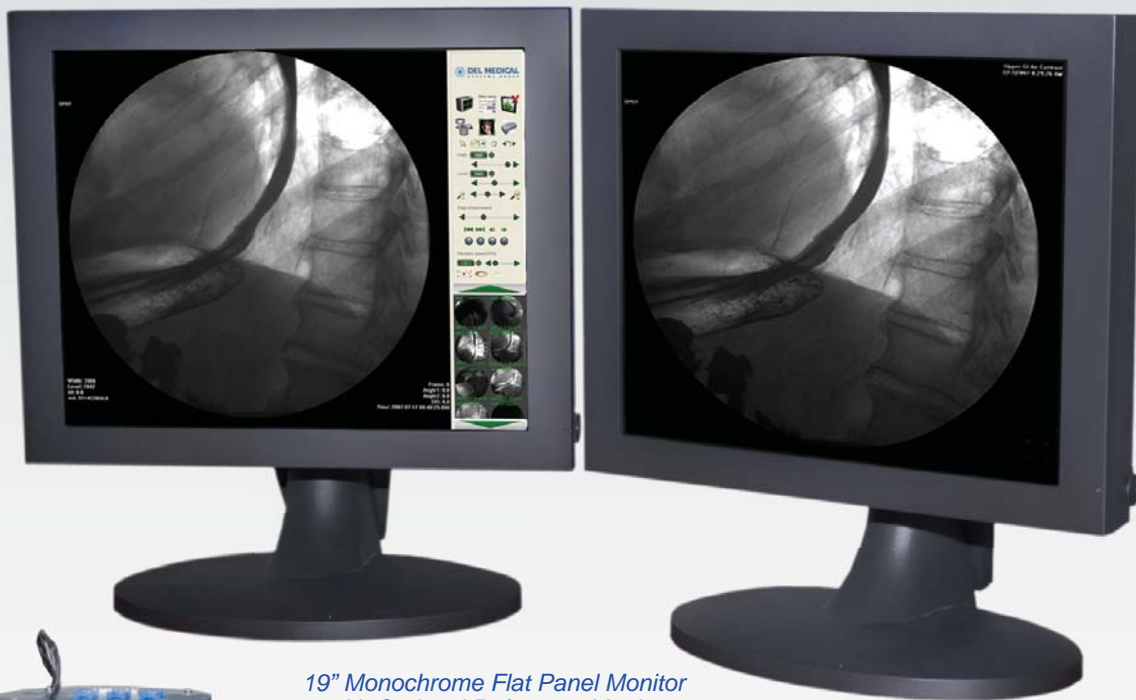


FluoroPRO™

RF DIGITAL IMAGING SYSTEM



FluoroPRO™ Computer



*19" Monochrome Flat Panel Monitor
with Optional Reference Monitor*



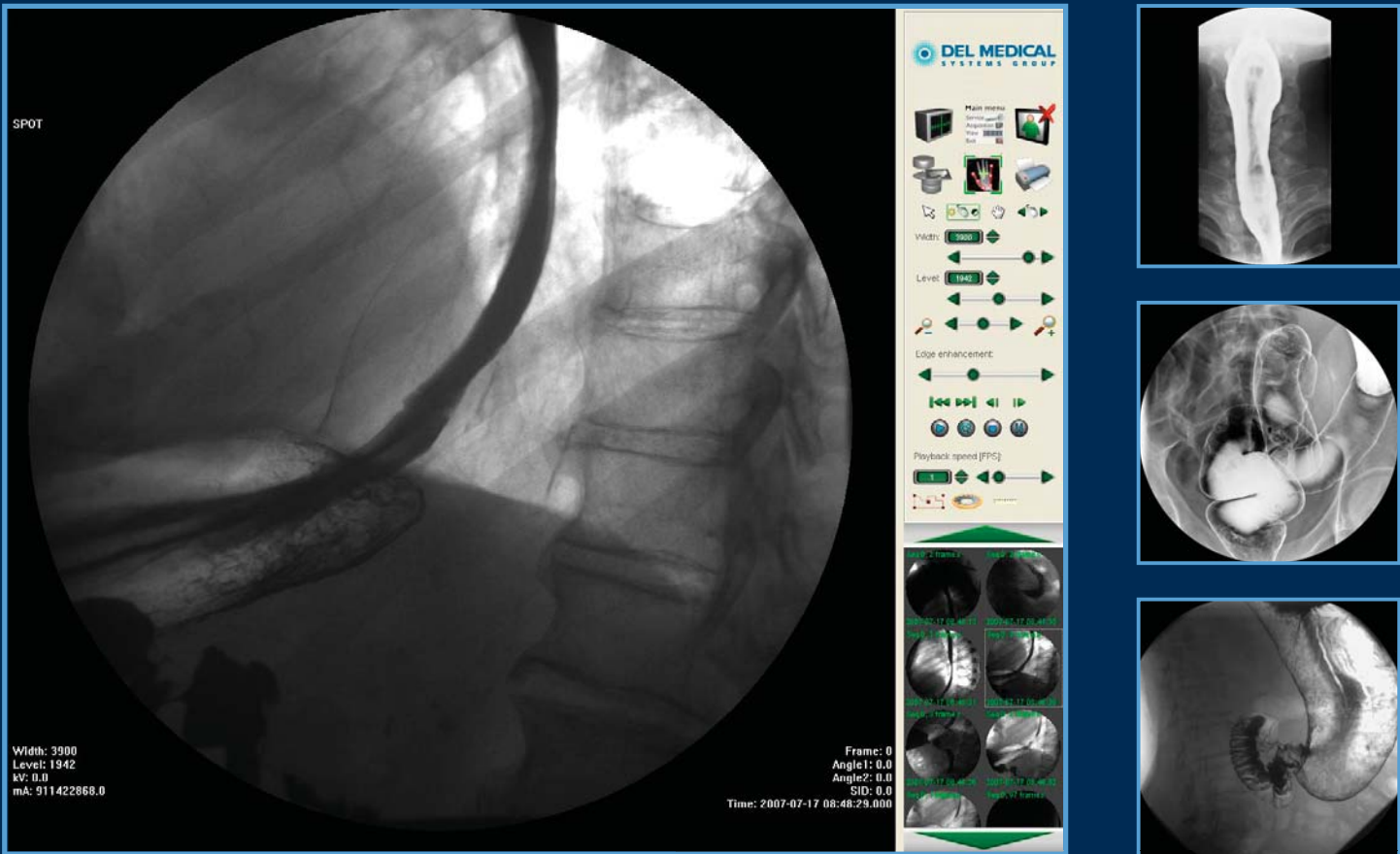
*High Resolution
CCD Camera*

The Next Generation in
RF Digital Imaging Systems



FluoroPRO™

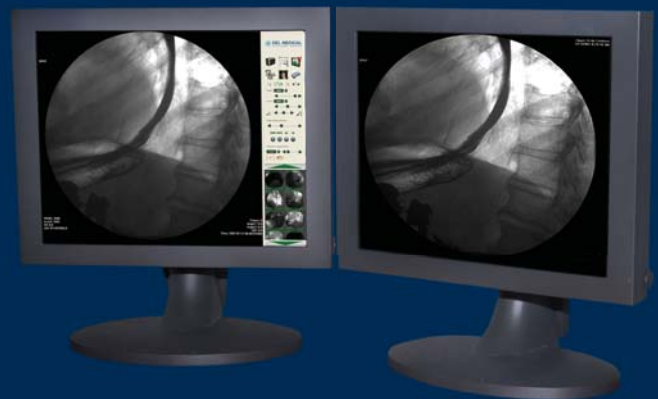
The **FluoroPRO™ Digital Imaging System** is a new concept in digital imaging for today's Radiographic and Fluoroscopic (RF) systems, providing a flexible and inexpensive solution without sacrificing features and performance.



FluoroPRO™ consists of a medical grade CCD camera, an image processor and a digital interface board. The camera is specifically designed for Fluoroscopic Imaging and can be integrated into any image intensifier to provide excellent image quality in low light conditions.

Similar systems are bound by rigid, inflexible software and hardware standards. **FluoroPRO™** breaks away from these limits with a streamlined, software-based solution, which evolves through simple software upgrades and eliminates the cost of proprietary image processing hardware. The system leverages the processing power and standard construction of today's PC computers; changes in PC models and configurations do not have an affect on the **FluoroPRO™** system.

The **FluoroPRO™** Digital Imaging System can be integrated into any new or existing RF room. Due to its flexible architecture **FluoroPRO™** can replace conventional spot film techniques and through a fully customizable GUI, the system offers the ability to view digital fluoroscopic images immediately, providing excellent image quality.



FluoroPRO™ can support up to 4 monitors
(2) live monitors and (2) reference monitors

STATE OF THE ART DIGITAL CCD CAMERA

The High Resolution Digital CCD camera is dedicated to radiological imaging and designed to be used with the most powerful image intensifiers to provide amazing image quality and easy installation into any existing system.

- 1024 x 1024 x 12 bits, 30 FPS, 40 MHz
- Direct Couple Lens improves imaging, eliminates optical distributor
- Enhanced electronics on camera head



All generator connections are made via RJ45 connectors from DIB (Simple Installation / Easy to service).

Digital Interface Board (DIB)

COST SAVINGS

- Increased return on investment
- Eliminate film, supplies and processing

INCREASED WORKFLOW

- Conduct exams in 1/2 the time
- Eliminate retakes

ENHANCED IMAGING

- Outstanding image quality
- Improved diagnostic ability

INTUITIVE USER INTERFACE

- Easy to use controls
- Image acquisition
- Fluoro and Pulsed Fluoro at up to 30 frames per second (*Generator must be pulsed fluoro capable for this feature to work*)
- Fluoro store up to 300 frames per sequence
- Spot images available from single to 15 frames per second (*Generator dependent*)
- Support for single or dual screen operation for "live" and "reference" monitors
- Immediate image review with post processing features such as measurement, annotations, and region of interest
- Standard image processing features include invert, zoom/pan, window/level, edge enhancement, and variable playback speed controls for multi-frame sequences.
- Custom configurable display parameters that enhance images for optimum review
- Patient studies can be printed to any DICOM printer, archived to PACS, or written to CDR/DVD-R in DICOM format

FluoroPRO™ & Apollo RF

The **FluoroPRO™ Digital Imaging System** integrates seamlessly with the Villa Apollo Multi-Functional RF system and the Vision 90/15 RF table. The outstanding versatility of the Apollo RF provides a perfect balance between operational efficiency and patient comfort with unsurpassed application flexibility for every need in radiographic and fluoroscopic procedures.

- Full patient examination can be achieved without longitudinal tabletop movement
- Automatic pre-positioning of all table movements reduces exam preparation time
- Large tabletop size that can be lowered down to 23" (60cm) with a patient weight capacity up to 626 lbs. (284kg)
- The AGS - Auto Grid Selection - automatically selects one of two grids to match the SID.



PREMIER DIGITAL SOLUTION

- Easily installed with any existing system
- Digital imaging reduces/eliminates need for film, processing and supplies
- Images are immediately available for review / diagnosis
- Easy to use GUI simplifies operation
- Fully DICOM 3.0 compliant
- Exceptional image quality is assured with High Resolution CCD camera and image optimization software

UPGRADE YOUR EXISTING ROOM

- Interface with virtually any generator and existing, new, or refurbished equipment.
- A cost effective way to add a fully DICOM enabled digital system to your existing generator, table, etc
- Extend your PACS solution capabilities with **FluoroPRO™** features
- Minimal down time with fast, easy installation

SPECIFICATIONS

COMPUTER

Intel PC with CoreDuo Processor

2 GB RAM

Intel Chipset

Window™ XP Pro Operating System

Digital Interface Board (DIB) and Power Supply provides connectivity to generator signals

MONITOR (S)

19" Monochrome Flat Panel Monitor

Optional Second Monitor (Reference), Optional 19" Color Monitor for Control Area (not intended for diagnostics)

ACQUISITION

Continuous and Pulse Fluoro: up to 30FPS @ 1024 x 1024 x 12 bit

Fluoro Save: up to 300 Frames

Spot Acquisition 1024 x 1024 x 12 bit

Rapid Spot Acquisition up to 15 FPS @ 1024 x 1024 x 12 bit
(Generator Dependent)

Fluoro Last Image Hold

Variable Edge Enhancement

Multi Level Temporal Filtering

DICOM

• Send / Receive

• Media Read / Write

• Print

• Performed Procedure Step

• Work List

• Windows™

• Windows™ Print To Standard Printer (Referral Purposes Only)

REPLAY

• Immediate Review of Acquired Images

• Save Image to Reference Monitor (Optional)

• Real Time Image Manipulation

• Annotation

• Zoom / Pan

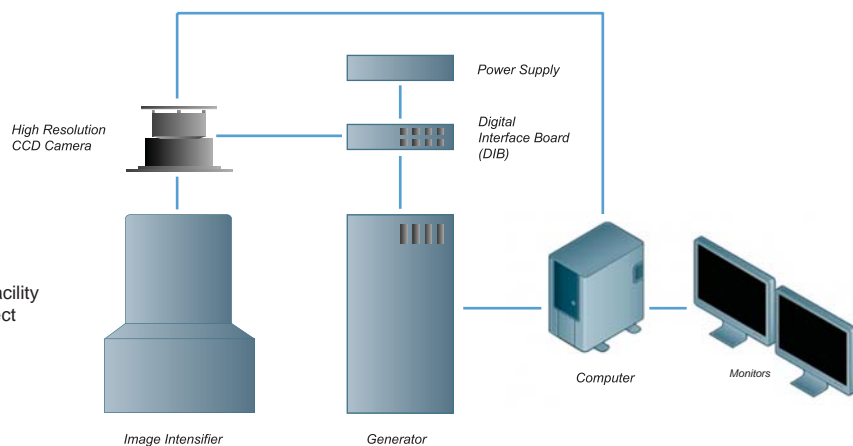
• Shuttering

• Image Rotation / Flip

• Region of Interest (ROI)

• Save Image as Photofile

CONFIGURATION EXAMPLE



Del Medical is an ISO13485 & ISO9001 Certified Facility
Complies with CDRH performance standards in effect
at time of shipment.

Some of the features pictured or described in this
brochure are optional.

Specifications are subject to change without notice.
FluoroPRO is a trademark of Virtual Imaging, Inc.



U.S.A.
Del Medical Systems Group
11550 West King Street
Franklin Park, IL 60131
Toll Free +1-800-800-6006
Tel: 847-288-7000
Fax: 847-288-7011
www.delmedical.com



EUROPE
Villa Sistemi Medicali
Via delle Azalee 3
20090 Buccinasco-MI-Italy
Tel: +39-02-48 85 91
Fax: +39-02-48 81 844